

2012-2013

ANNUAL REPORT



www.jccap.org

OUR MISSION

To provide and coordinate activities which alleviate poverty, promote family self-sufficiency, and advance community prosperity.

OUR VISION

To be recognized as a premier organization dedicated to solving social and economic problems of the community.

FROM OUR PRESIDENT AND EXECUTIVE



Richard G. Fetterman
Board President

Alleviating poverty is the fundamental purpose of Community Action's work and includes empowering families to achieve self-sufficiency, as well as partnering with the community to solve local problems. The direct services we provide are summarized in this Report, however our community initiative work may be our best and enduring means of helping people and changing lives.



Robert A. Cardamone
Executive Director

The family and community successes of Community Action are based on building partnerships and establishing collaborations with businesses, churches, schools, government, social and civic organizations, and individuals.

Community Action, Inc. is honored by the trust and support we receive from our partners and we remain committed to our mission and vision. Together, we can continue helping our families and the community prosper.

BOARD OF DIRECTORS

Clarion County

Low-Income Representatives

Clara W. Belloit, Clarion Ministerium
Lori A. Brown, Clarion County Housing Authority
Renee Vowinkel, Pennies From Heaven

Elected Public Officials

Scott Hutchinson, State Senator
Donna R. Oberlander, State Representative
G. Butch Campbell, Clarion County Commissioner

Private Sector

Judith Gardner, Clarion County Assistance Office
Lee N. Stewart, Stewart Laboratories ³
Ronald J. Wilshire, Clarion University of Pennsylvania ²

Jefferson County

Low-Income Representatives

Pamela M. Johnson, Jefferson-Clarion Head Start, Inc. ⁴
Steve J. Mehok, Jefferson County Housing Authority
Melva McGranor, Jefferson County Area Agency on Aging

Elected Public Officials

Samuel H. Smith, State Representative
James P. McIntyre, Jefferson County Commissioner
James Wehrle, Punxsutawney Mayor

Private Sector

Granville E. Carter, Laurel Legal Services
Rebecca Mitchell, Jefferson County Assistance Office
Richard G. Fetterman, Shriners of North America ¹

President ¹ Vice-President ² Secretary/Treasurer ³ Assistant Secretary ⁴

SERVICES PROVIDED



ADULT EDUCATION

Provides individuals with instruction in a classroom/computer lab setting to: improve reading, math, and computer skills; enhance job readiness; conduct career exploration and training preparation; and develop skills to pass the General Educational Development (GED) test. Support services and case management are also available. Tutors provided on a case-by-case basis.



ENERGY CONSERVATION & WEATHERIZATION PROJECT

Installs materials to reduce home energy consumption; also provides energy conservation education.



FAMILY / FOOD SERVICES

Provides limited help for rent, mortgage, utility bills, and food. Offers assistance with the completion of food stamp applications.



BUILDING ECONOMIC SUCCESS TOGETHER (BEST)

Provides intensive case management to enable high school dropouts to obtain a GED and develop career plans. Individuals must be actively seeking employment or better employment. Child care, transportation, and training assistance are available.



HOMELESS SERVICES

Provides the homeless: emergency shelter; transitional housing; help with locating and establishing a new residence; and case management. Also provides homeless veterans and their families with supportive services.



CASE MANAGEMENT

Assisted by a case manager, individuals develop goal plans, and the family overcomes barriers and works to achieve economic independence.

MEDICAL ASSISTANCE TRANSPORTATION

Provides non-emergency mileage reimbursement and transportation services to enrolled Jefferson County residents with a valid Department of Public Welfare PA Access card. Enrollees must be traveling to and from a medical assistance covered service.



DOMESTIC VIOLENCE INTERVENTION/PREVENTION

Provides victims of domestic violence and their children emergency shelter, 24-hour hotline, community and school educational programs, options counseling, legal advocacy and group support.



FINANCIAL FITNESS

Provides budgeting and financial planning to increase available family income and reduce expenses. A variety of money saving practices are offered such as: budgeting; food stamps; couponing; meal planning; and maintaining a checking account.

New Choices
Career
Development

NEW CHOICES CAREER DEVELOPMENT

Prepares individuals for a new career using a curriculum that includes: basic computer skills; career assessment; personal development; communication; job/training search skills; decision making; problem solving; entrepreneurship; and much more. Vocational counseling is also provided regarding local career opportunities.



YOUTH OPPORTUNITIES

Engages youth in activities that promote personal and community responsibility, work ethics, work readiness, financial literacy, and leadership skills.

AN AFFILIATE OF



PARENTING SERVICES

Provides education, advocacy, and support through a facilitated parent leadership model. Groups are held weekly and telephone support is available through a 24-hour hotline.



INFORMATION TECHNOLOGY

Provides software development and technology consulting.



SENIOR CORPS - RSVP

Utilizes the talents of volunteers ages 55 and over to meet community needs. Senior Corps-RSVP Volunteers choose activities relating to their skills, interest, and time availability. Volunteers mentor children, conduct environmental tests, perform clerical duties, assist the elderly, tutor adults, and much more.



COMMUNITY DEVELOPMENT

Partnering to build community capacity, and advocating and mobilizing collective action to solve community problems.

EXPENSE BREAKDOWN

Support and Revenues:

Federal/State Grants	\$ 4,821,240
Program service fees	142,617
Contributions	120,606
Other	
- Rental income	35,592
- In-Kind contributions	25,382
- Gains or disposal of fixed assets	22,516
- Investment income (loss)	5,996
- Technology consulting services	252,095
- Miscellaneous income	23,692
- Special events	1,620

Total Revenues **\$ 5,451,356**

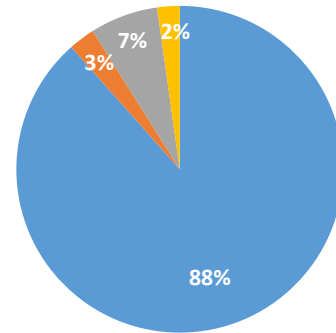
Expenses

Advertising & Publications	\$ 9,456
Auto Expenses	17,617
Child Care Fees	1,121,010
Client Travel & Assistance	1,338,878
Consumer Support	13,989
Contracted Services	97,371
Depreciation	11,714
Employee Benefits	356,664
Equipment Rental & Maintenance	21,612
Federal Taxes	9,840
Food & Meals	23,747
Fund Returned	1,728
Housing Assistance	74,340
Human Resources & Fiscal Services *	9,117
Information Technology *	39,659
Insurance	30,240
License & Registration	9,888
Meetings	1,723
Miscellaneous	2,195
Occupancy *	93,250
Payroll Taxes	118,353
PCADV Administrative Fee	5,988
Postage *	17,089
Printing & Copying *	13,490
Rental Property Expense	2,032
Salaries & Wages	1,558,063
Small Equipment & Tools	5,643
Supplies	20,425
Telephone *	33,452
Training & Technical Assistance	425
Travel	42,341
Utilities	24,284
Volunteer Support	7,025
Weatherization Services	237,403

Expenses Total **\$ 5,370,051**

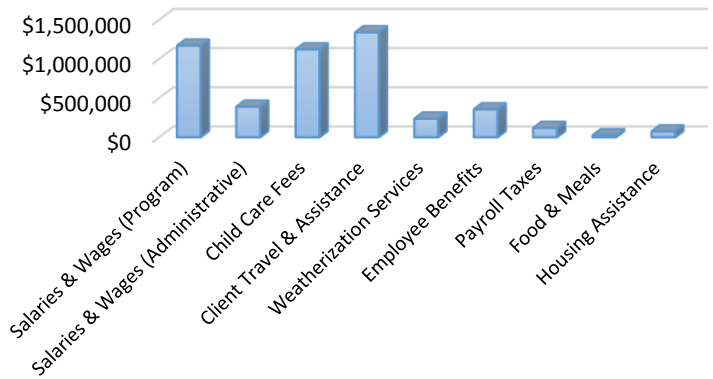
* Excludes Wages & Benefits

SUPPORT & REVENUES

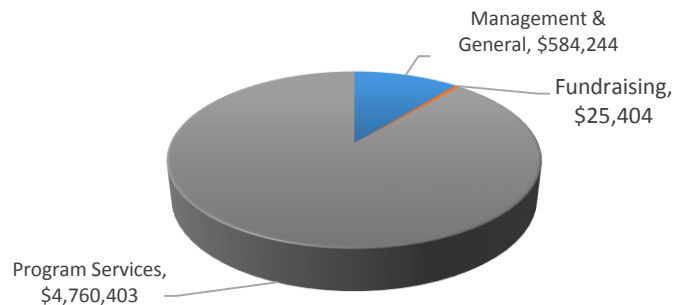


■ Federal/State Grants ■ Program service fees
■ Other ■ Contributions

EXPENSE BREAKDOWN



FUNCTIONAL EXPENSES

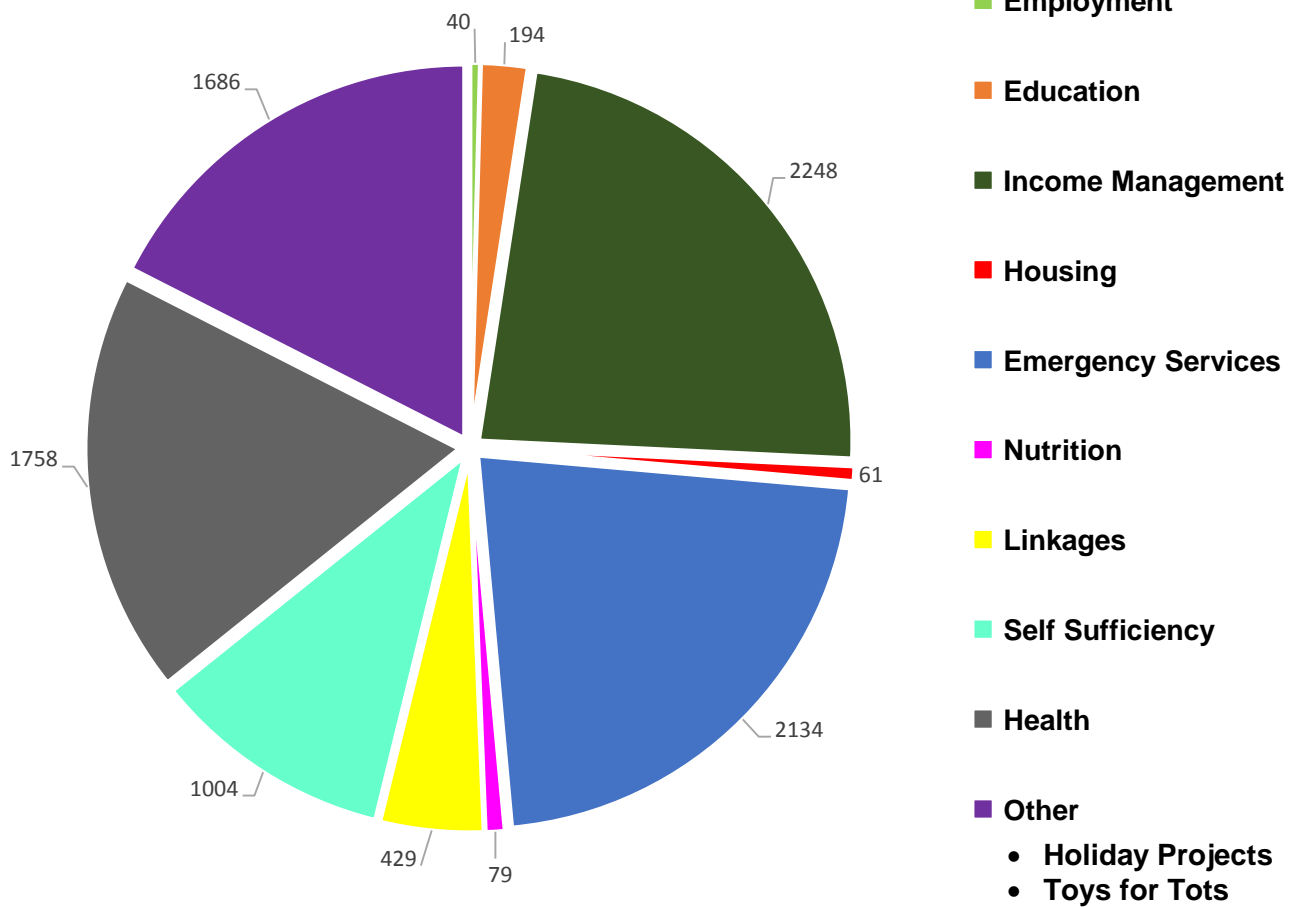


Services are provided without regard to race, color, religious creed, age, sex, ancestry, union membership, sexual orientation, gender identity, national or ethnic origin, disability, and without regard to whether the person is a victim of a violent crime (including domestic violence).

This document was financed in part by a grant from the federal Department of Health and Human Services under the Administration of the Commonwealth of Pennsylvania, Department of Community and Economic Development.

SERVICE INFORMATION

INDIVIDUALS SERVED



ECONOMIC IMPACT ON THE COMMUNITY

Wages contributed to the local economy	\$1,558,063
Real estate and payroll taxes contributed to local economy	\$120,385
Purchase of goods and services from local vendors	\$3,017,393
Social services & direct assistance to consumers/tenants	\$2,809,367
In-kind and volunteer services	\$54,852
Current value of all real estate held	\$496,840

Community Action, Inc. has helped thousands of people work towards self-sufficiency since we opened in 1965.

During 2012-2013 with your help...

- we served 8,309 Clarion and Jefferson County residents.
- we assisted over 801 Clearfield and Jefferson County domestic violence victims.
- we distributed food vouchers to 1,889 of your neighbors to ensure they have adequate, nutritious food.
- we arranged transportation for 1,527 consumers to medical appointments.

WISH LIST:

- | | |
|--|--|
| \$25 - provides budget counseling for one family. | \$500 - provides a family with housing for one month. |
| \$50 - provides clothing/holiday gifts for one child. | \$675 - provides books and instruction to help an individual prepare to take the General Education Development (GED) test. |
| \$200 - provides assistance for one man to live in shelter for 30 days. | \$750 - provides assistance for one month to a family living in shelter due to domestic violence. |
| \$225 - provides food assistance to a family of four for one week. | \$1,025 - provides one year of case management for a family. |
| \$300 - provides heat for one month to a family not qualifying for subsidy heating programs. | |

Local funds are vital to helping families in Clarion and Jefferson Counties. To help us help others in your community, please return this form and your contribution to one of our locations. A secure donation can also be made through our website.

Community Action, Inc., 105 Grace Way, Punxsutawney, PA 15767
or 30A South Sheridan Road, Clarion, PA 16214

YES, I/We want to support Community Action, Inc. and local families through this tax deductible gift of:

\$25 _____ \$50 _____ \$100 _____ \$200 _____ \$500 _____ \$1,000 _____ other \$ _____

() Please use my donation where it will help most, or () please use my donation for _____

() I would like to volunteer my time. My interests are _____

Name _____ Phone _____

Address _____

Your donation may be tax deductible. Tax deductible means you can deduct the contribution on your federal income tax return because Community Action, Inc. is a 501(c) (3) tax exempt charitable corporation.

The official registration and financial information of Community Action, Inc. may be obtained from the Pennsylvania Department of State by calling toll free, within Pennsylvania, 1-800-732-0999. Registration does not imply endorsement.

Community Action's National Goals

- *Low-income people become more self-sufficient.*
- *Conditions in which low-income people live are improved.*
- *Low-income people own a stake in the community.*
- *Partnerships among supporters and providers of services to low-income people are achieved.*
- *Agencies increase their capacity to achieve results.*
- *Low-income people, especially vulnerable populations, achieve their potential by strengthening family and other supportive services.*

